

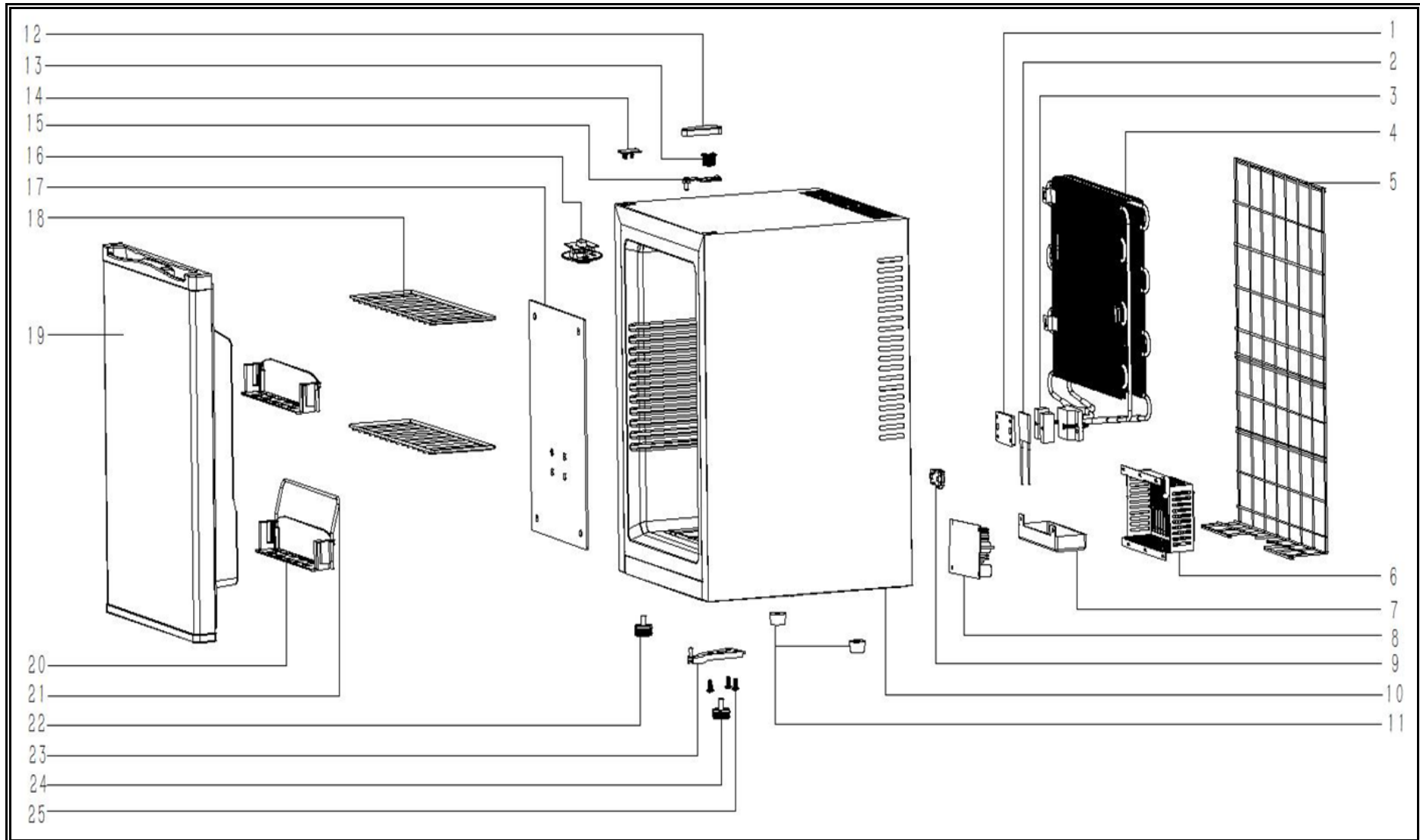


**7013.2565**

Onderdelen informatie  
Erzatzteil information  
Spare part information  
Information de pièces







| POS: | Art.No.:    | Omschrijving:              | Aantal: |
|------|-------------|----------------------------|---------|
| 1    |             | Cold aluminium             | 1       |
| 2    |             | Cooling module             | 1       |
| 3    | CS9338.4122 | EVA gasket                 | 1       |
| 4    |             | Condensor                  | 1       |
| 5    |             | Back cover                 | 1       |
| 6    |             | Power box                  | 1       |
| 7    |             | Water pan                  | 1       |
| 8    |             | Power PCB                  | 1       |
| 9    |             | Clamp                      | 1       |
| 10   |             | Cabinet                    | 1       |
| 11   |             | Rubber feet -15mm          | 2       |
| 12   |             | Upper hinge cover          | 1       |
| 13   |             | 5*14 Screw                 | 3       |
| 14   |             | Upper hinge flat cover     | 1       |
| 15   |             | Upper hinge                | 1       |
| 16   | CS9338.4123 | LED light+thermostat       | 1       |
| 17   |             | Cooling plate              | 1       |
| 18   | CS9338.4124 | Shelves                    | 2       |
| 19   |             | Door                       | 1       |
| 20   |             | Door rack                  | 2       |
| 21   |             | Door wire rack             | 1       |
| 22   |             | Adjustable feet-14mm       | 1       |
| 23   |             | Lower hinge                | 1       |
| 24   |             | Adjustable small feet-10mm | 1       |
| 25   |             | 5*14 Screw                 | 3       |